

Options for Your Wednesday Afternoon



Downtown Kansas City, Union Station

Welcome to the Paris of the Plains! Wednesday afternoon is a time to experience local culture and attractions, connect with new and old friends and enjoy a bit of relaxation. Kansas City has a lot to offer, and we will be running a shuttle to and from Union Station in Downtown Kansas City from 2:00 until 4:00pm and again from 8:00 until 10:00pm. The shuttle service is free to conference participants. You also have the option of using your personal or rented vehicle.



Union Station and Crown Center: This refurbished train station boasts theaters, ongoing museum exhibits, and attractions such as the Science City at Union Station, the Irish Museum and Cultural Center, Gottlieb Planetarium, and Escape Room Kansas City. The nearby Crown Center features more theaters, The Hallmark Visitors Center, LEGOLand, Ice Skating Terrace, and the SEALIFE aquarium.



Liberty Memorial and National WWI Museum: America's official World War I museum and memorial, located in Kansas City. Home to the most comprehensive collection of WWI objects in the world.

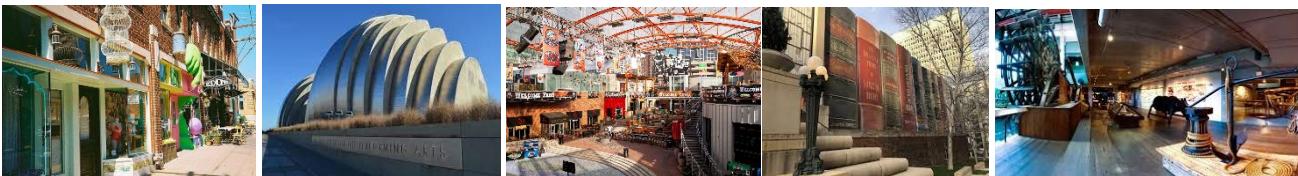


Kansas City Federal Reserve Bank and National Money Museum: See how the Bank processes millions of dollars in currency each day, lift a real gold bar, view the historic Harry S. Truman coin collection and enjoy fun, interactive exhibits while learning about the U.S. economy.



Kansas City Street Car: From Union Station you can catch the free Kansas City Streetcar with which you can explore this beautiful city to the north. Some notable stops from South to North include:

- The Crossroads Arts District: known for dozens of art galleries, unique restaurants and bars, and live music venues.
- Kauffman Center: This stop grants riders easy access to the Kauffman Center for the Performing Arts, One of the most striking silhouettes in the Kansas City Skyline.
- Power and Light District: This dining, shopping, and entertainment district comprises nine blocks in the heart of Kansas City. It contains a one-block live entertainment area two floors of bars and restaurants, a large partially enclosed courtyard, an Alamo Drafthouse movie theater, AND - most excitingly - the world headquarters of H&R Block.
- Metro Center: This stop feature One Kansas City Place, the tallest building in the state of Missouri along with some of the other tallest skyscrapers in the KC skyline. It is also the North end of the power and light district.
- Library district: Aptly named for the beautiful and historic Central Library, this stop boosts not only the world-famous Library (which looks like a giant bookshelf), but also diverse and notable architecture including several buildings listed on the National Register of Historic Landmarks.
- North loop: The trendy North end of the Power and Light District features clothing boutiques, spas, and luxury apartments
- City Market Stops: Explore this riverfront neighborhood comprising the first and oldest incorporated district in Kansas City. This stop has several restaurants, shops, bars, and cafes as well as the Arabia Steamboat Museum - a popular tourist attraction displaying thousands of artifacts from a steamboat and its cargo that had sunk nearby in 1856 and was recovered in 1987–88.



At Heartland:

Annual PCCCA Disc Golf Tournament is scheduled after lunch on Wednesday. Enjoy the thrill of competition against the best disc golfers this organization has to offer on Heartland’s beautiful 18-hole disc golf course. After playing, participants can grab the shuttle into downtown Kansas City for dinner.

Other notable Kansas City locations (you will need to provide your own transportation):

Harry S Truman Presidential Library - the presidential library and resting place of Harry S. Truman, the 33rd president of the United States

Negro League Baseball Museum - the world's only museum dedicated to preserving and celebrating the rich history of African-American baseball and its impact on the social advancement of America.

Kansas City Zoo – With more than 1700 animals over 200 acres, this family-friendly destination promotes understanding, appreciation, and conservation of the natural world

Boulevard Brewing Company - This brewery features an historic taproom, hour-long informative brewery tours, and of course, fantastic beer. Call early to reserve your brewery tour slot.

American Jazz Museum - The American Jazz Museum showcases the sights and sounds of jazz through interactive exhibitions and films, visual arts exhibitions in the Art Gallery and Photography Gallery, the Blue Room Jazz Club, and the Gem Theater performing arts center.

National Museum of Toys and Miniatures – Pretend you are a giant at this museum, which educates, inspires, and delights adults and children through the museum's collection and preservation of toys and miniatures.

Country Club Plaza – Explore 15 blocks of shopping and dining in the heart of Kansas City, Missouri with 100 stores, 30 restaurants, and amazing architecture.

Loose Park - At 75-acres, Jacob L. Loose Park is one of Kansas City's most popular, beautiful and historical public spaces. The park is well-known locally as being a major site for the Battle of Westport where Confederate forces were routed by Union forces in the area in which the park is now located. It is estimated that 29,000 people were involved in the battle.

Falcon Skydiving - \$155 per person tandem jump weather permitting